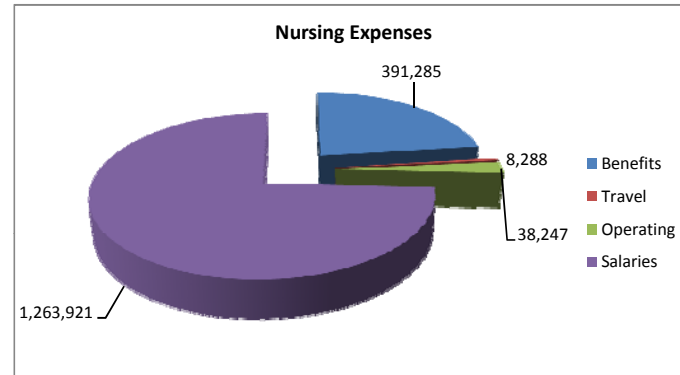
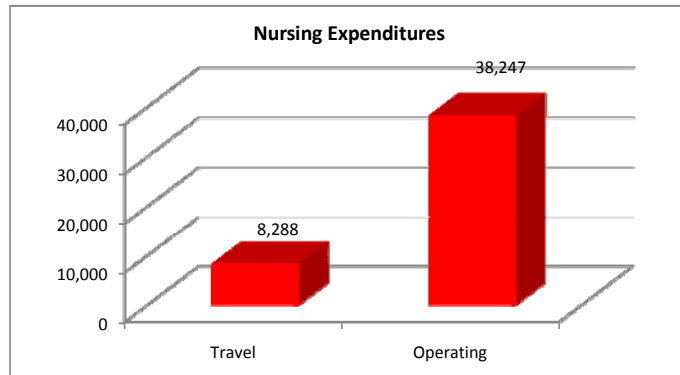
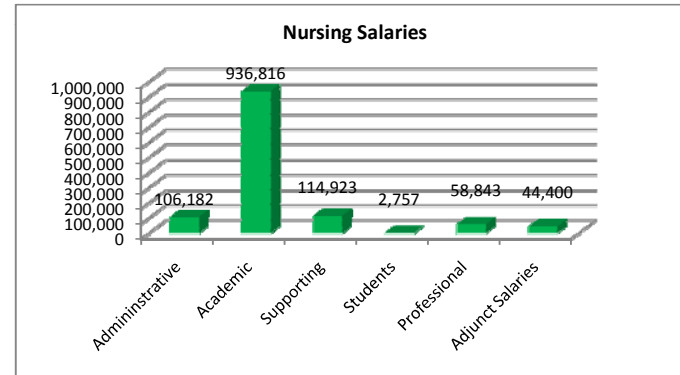
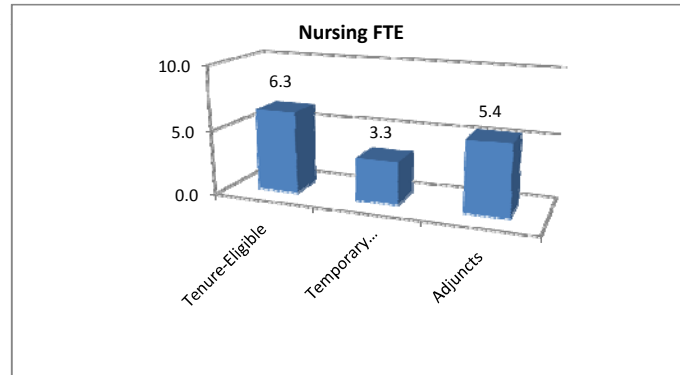
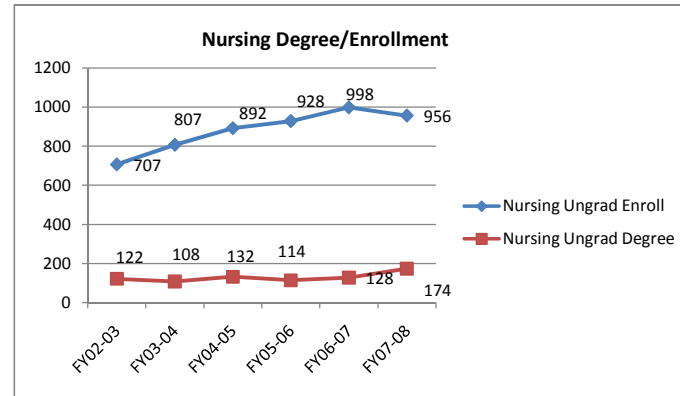
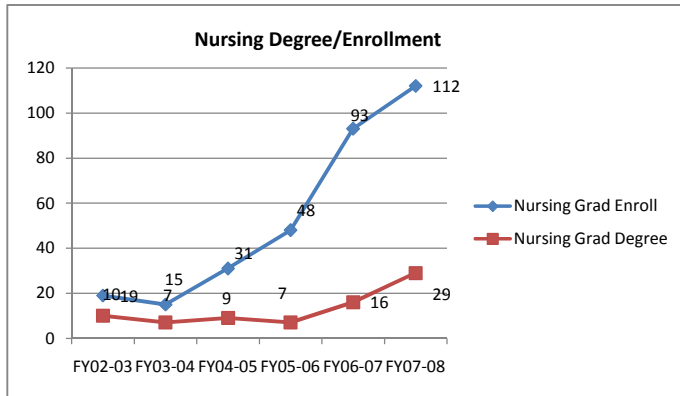
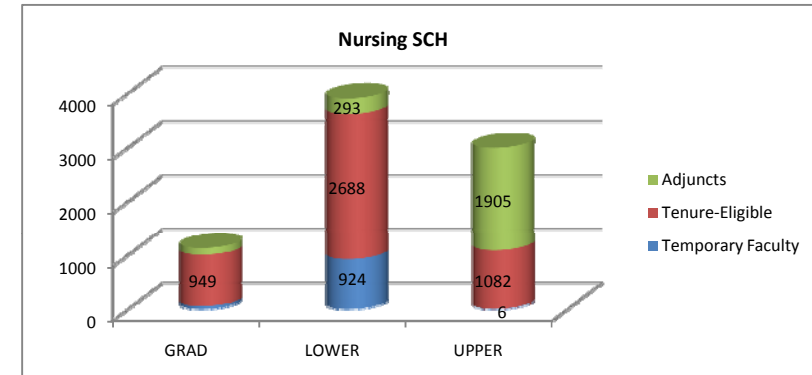


Nursing



1. Total Headcount faculty (Fall 2007)	34.0
2. Total FTE Faculty (Fall 2007)	15.0
3. Tenured/tenure eligible faculty as % of total instructional faculty (Fall 2007)	64%
4. FTE students taught (Fall 2007)	311.4
5. Total Expenditures Nursing	\$ 1,701,741.00
6. Direct instructional expenditure per SCH	\$ 299.00
7. Direct instructional expenditure per FTE student	\$ 8,107.00
8. Personnel cost as percent of direct instructional ex	98%

UNDERGRADUATE PROFILE	Undergrad	GRADUATE
Total	956	112
Gender		
Women	864	96%
Men	92	10%
Race/Ethnicity		
African American / Black	650	68%
American Indian / Alaskan Native	0	0%
Asian / Pacific Islander	23	2%
Hispanic	11	1%
International	0	0%
White	271	28%
Race/Ethnicity Unknown	1	0%
Geographic Distribution (Degree-Seeking)		
Tennessee	86%	88%
Other US States & Territories	14%	9%
Other Countries	0%	3%
Age (Degree-Seeking)		
Average Age	25.97	37.03
Percent of Undergraduates Age 25 or Older	41%	96%



NOTICE: Data Sources: SIS Batch Reports; Banner Scripts & Query Reports; 2008-2009 Budget Summary. This data portrait, prepared by the Office of Institutional Effectiveness, Quality & Assessment, is for internal use only by TSU.